

The appliance of composite science to underground access covering

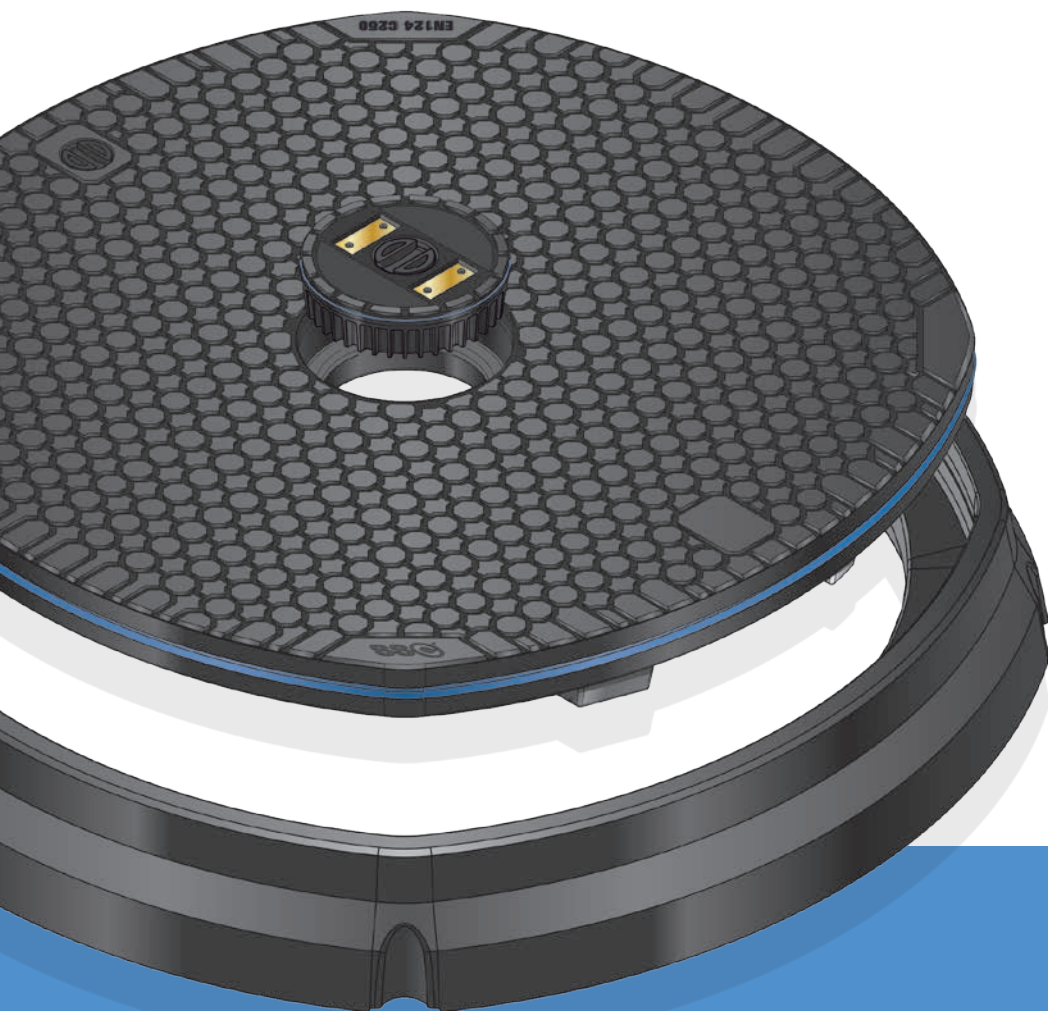
# ThruBeam<sup>®</sup>

C O V E R S

C250 Range

CR90-A/CR90-DC

900mm Round  
Petroleum Forecourt  
Composite Access Covers



## The Benefits of a Structural Science composite cover over traditional covers

### High structural performance

Meets European EN124 C250 standards.

### Extended working life

Will not break or spin out. The torsional resistant frames eliminate many of the usual causes of wear with traditional covers.

### Permanent anti-slip

Exceeds 0.60 co-efficient of friction even when wet and will retain this anti-slip value throughout its working life.

### Secure and lockable

Can be supplied with or without a lock. Cover cannot be left unlocked on replacement. A high security key option is also available.

### Injury free removal

Single person removal and replacement without the risk of back injury utilising ergonomically designed lifting tool. Can be supplied with a seal breaker for the watertight version.

### Reduced maintenance programmes

Longevity, ease of moving and superior performance reduces maintenance programs. Fitting an SSC cover is the best 'whole life' choice.

### Sealing (optional)

100% watertight/sand tight with a unique self cleaning edge seal.

### No residual value

Reduced risk of theft.

### Transparent to radio waves

'Smart' covers available. Negates the lifting of covers and helps promote better signals being transmitted.

### Non-corrosive

Will not corrode when in contact with other materials. Unaffected by fuels, sand, salt and all chemicals met in road environments.

### Electrically non-conductive or conductive

Will not conduct electricity, so stray voltage problems are negated. Can be made conductive if required.

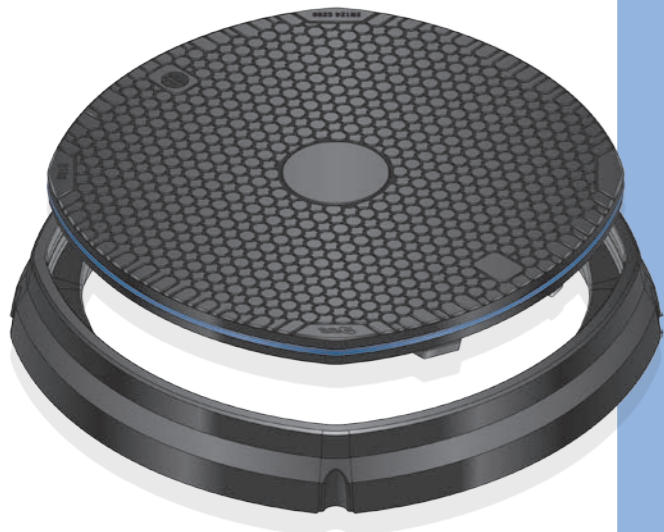
### Central dip cap

Can be supplied with colour coded central dip to identify fuels.

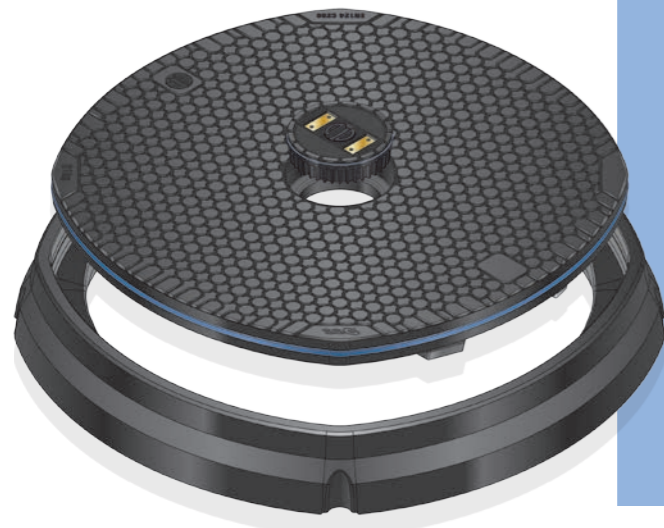
### Client design service

SSC project managed bespoke design services will use our patented ThruBeam® technology to design alternative size and shape solutions to meet customer requirements.

**CR90-A** 900mm Round locked cover with keyhousing, watertight seal and **CR90-FR** Frame



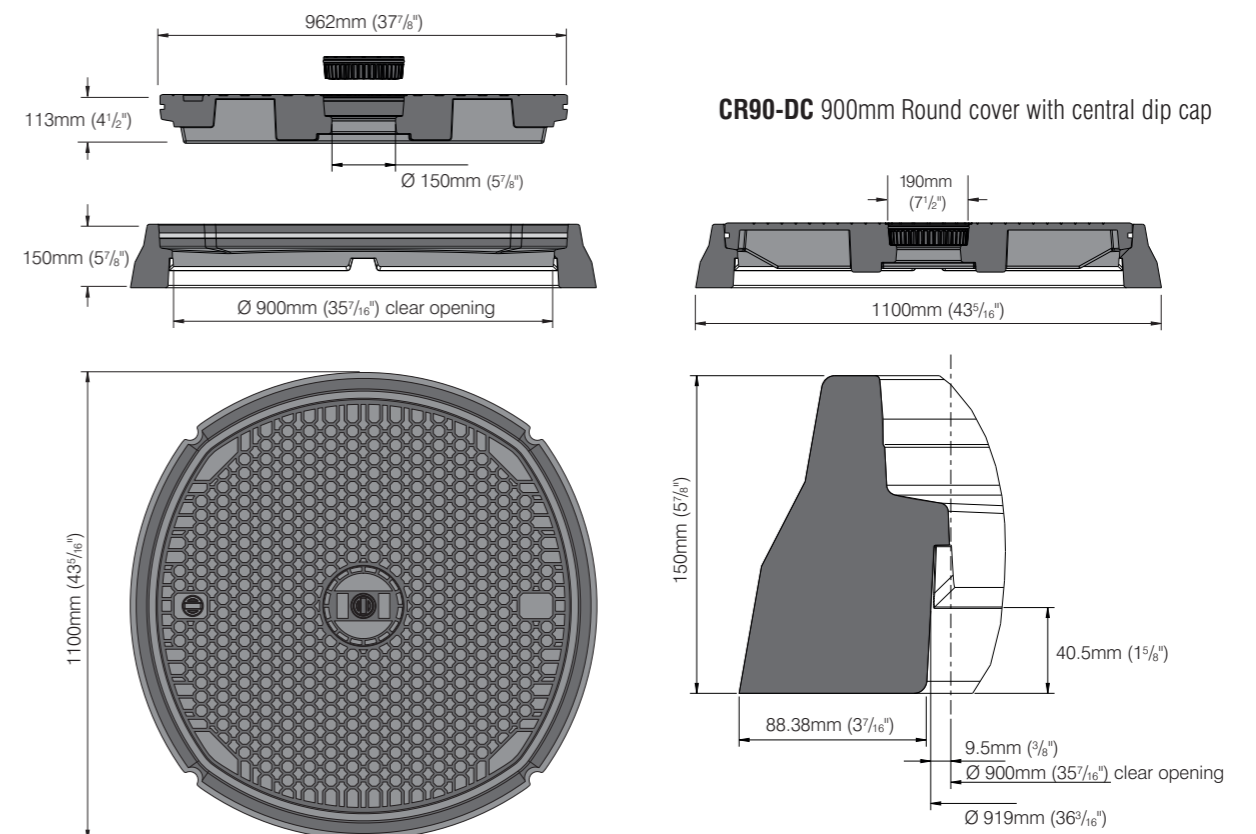
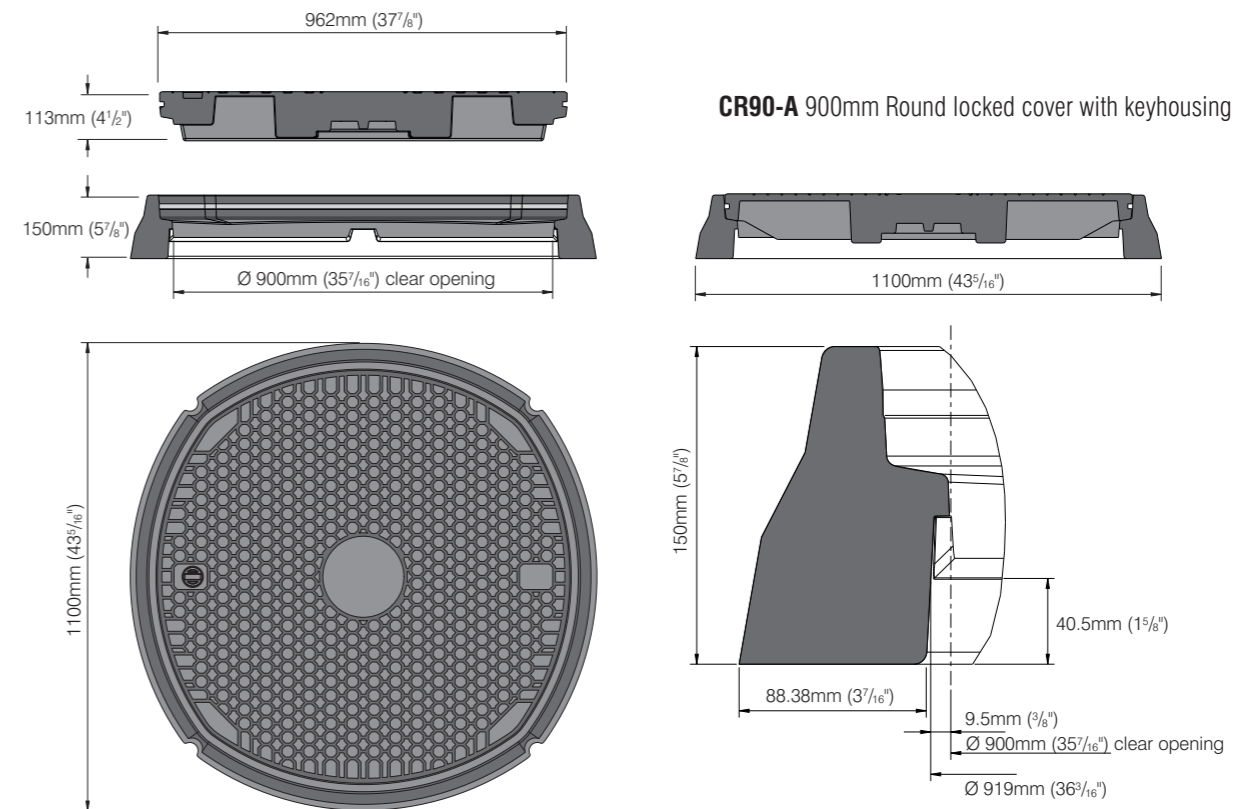
**CR90-DC** 900mm Round cover with central dip cap, watertight seal and **CR90-FR** Frame



## Dimensions

EN124:1994 Class C250 CR90-A and CR90-DC  
900mm Diameter Composite Access Cover

**ThruBeam**  
COVERS



For further information relating to our full product range please go to [www.structuralscience.net](http://www.structuralscience.net) and download the appropriate pdf file.

The frame is to be installed to the appropriate standard/specification for that particular installation. For reference purposes only. This drawing is not a specification.

## Technical Specification

EN124:1994 Class C250

CR90-A and CR90-DC

900mm Diameter Composite Access Cover

### Cover Specification

Load Rating:	EN124:1994 Class C250
Clear Opening:	900mm Diameter (35 <sup>7</sup> / <sub>16</sub> " CR90-DC incorporates additional central dip cap with 150mm clear opening
External Dimensions:	962mm Diameter (37 <sup>7</sup> / <sub>8</sub> "
Skid Resistance (wet polishes)	PSRV 60
Weight:	31kg (68.3lb) Combined weight with frame 46kg (101.4lb)
Lifting points:	Single key housing
Tread depth:	Tread depth complies with EN124:1994
Tread type:	Embedded aggregate – uni-directional
Wear Indicators:	Four moulded
Markings:	Week, year and location of manufacture on the underside of cover. Cover size, weight on the top surface.
Corrosion/Chemical resistance:	All component parts are resistant to chemical attack, diesel, petrol, salt and water or a combination of the above over the lifespan of the cover. Surface discolouration is acceptable in service.
Combustion properties:	All component parts do not support combustion. Products of combustion do not contain harmful chemicals (e.g. bromides)
Sealed:	Yes (optional - can be retro-fitted)
Vented:	Available on request
Carbon footprint:	Low
Material:	Advanced fibre glass composite
Client logo:	Can be provided on top surface
Security Features:	Lock and security plug (lock cannot be left open on replacement of cover)

### Frame Specification

Load Rating:	EN124:1994 Class C250
Clear Opening:	900mm Diameter (35 <sup>7</sup> / <sub>16</sub> "
Weight:	15kg (33lb)
External Dimensions:	1100mm Diameter (43 <sup>5</sup> / <sub>16</sub> "
Material:	Advanced fibre glass composite
Installation Details:	Provided in full as separate document

Designs and specifications are subject to alteration, so that continuous improvement can be undertaken.



### Structural Science Composites Ltd

8 James Freel Court, James Freel Close, Barrow In Furness, UK, LA14 2NG  
T: +44 (0)1229 814340 E: covers@structuralscience.net W: www.structuralscience.net