

The appliance of composite science to underground access covering

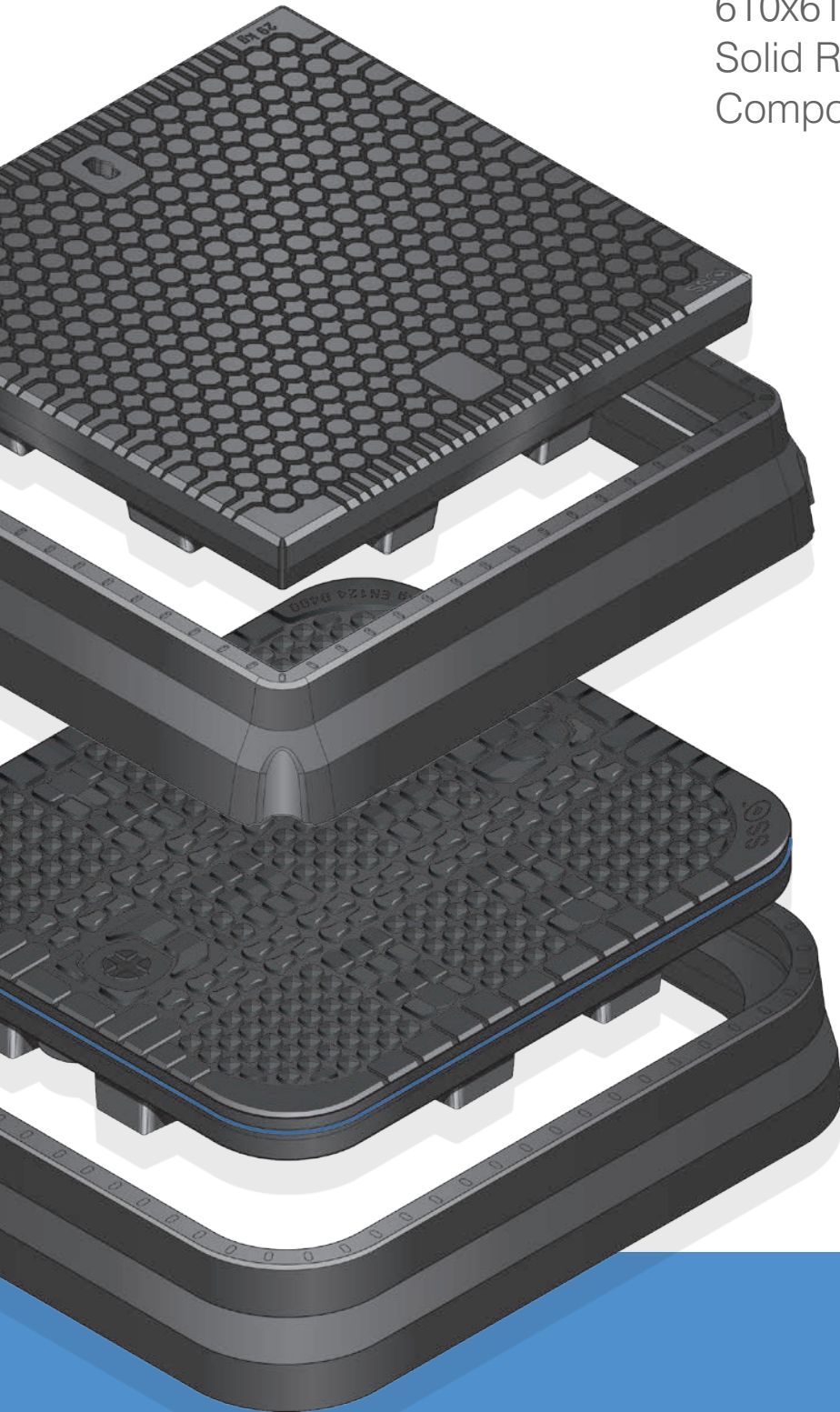
ThruBeam[®]

C O V E R S

D400 Range

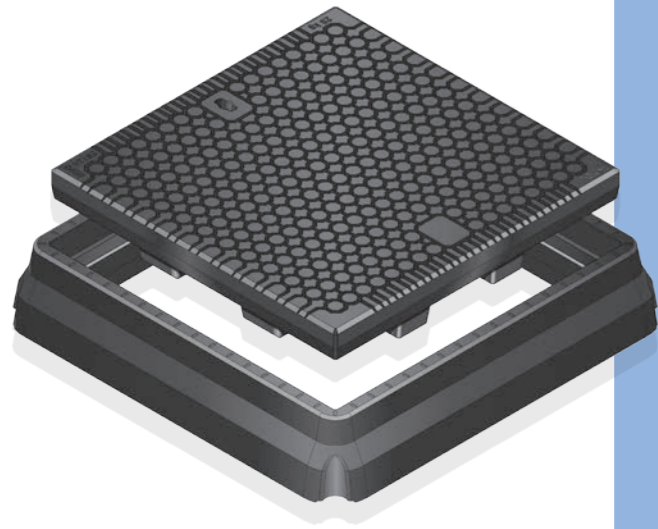
DS6 & DM6

610x610mm and 600x700mm
Solid Rectangular Vehicular
Composite Access Covers

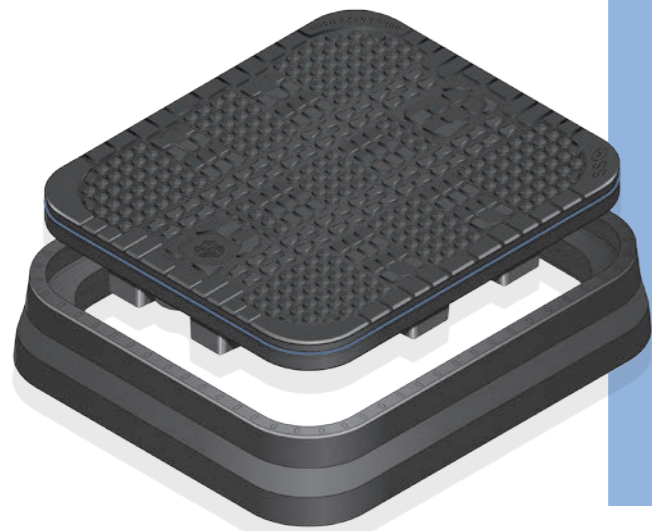


The Benefits of a Structural Science composite cover over traditional covers

DS6 610x610mm Square cover and **DS6-FR** Frame



DM6 600x700mm Rectangular cover, watertight seal and **DM6-FR** Frame



High structural performance

Meets European EN124 D400 standards.

Extended working life

Will not break or spin out. The torsional resistant frames eliminate many of the usual causes of wear with traditional covers.

Permanent anti-slip - cycle and motorbike friendly

Exceeds 0.60 co-efficient of friction even when wet and will retain this anti-slip value throughout its working life unlike conventional metal covers.

Secure and lockable

Can be supplied with or without a lock. Cover cannot be left unlocked on replacement. A high security key option is also available.

Injury free removal

Single person removal and replacement without the risk of back injury utilising ergonomically designed lifting tool. Can be supplied with a seal breaker for the watertight version (DM6).

Reduced maintenance programmes

Longevity, ease of moving and superior performance reduces maintenance programs. Fitting an SSC cover is the best 'whole life' choice.

Sealing (optional DM6 only)

100% watertight/sand tight with a unique self cleaning edge seal.

Ventable

Covers can be vented which helps prevent the build up of gases. Holes conform to ADA regulations.

No residual value

Reduced risk of theft.

Transparent to radio waves

'Smart' covers available. Negates the lifting of covers and helps promote better signals being transmitted.

Non-corrosive

Will not corrode when in contact with other materials. Unaffected by fuels, sand, salt and all chemicals met in road environments.

Electrically non-conductive or conductive

Will not conduct electricity, so stray voltage problems are negated. Can be made conductive if required.

Client design service

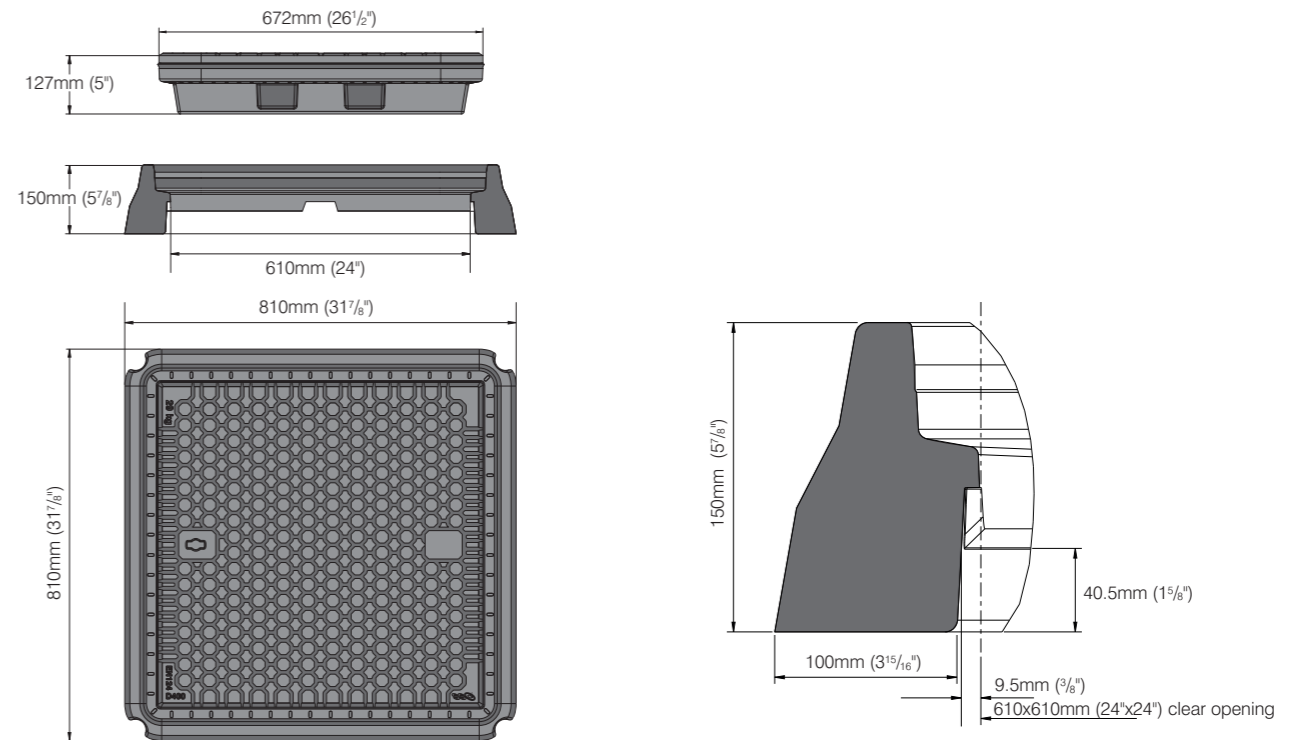
SSC project managed bespoke design services will use our patented ThruBeam® technology to design alternative size and shape solutions to meet customer requirements.

For further information relating to our full product range please go to www.structuralscience.net and download the appropriate pdf file.

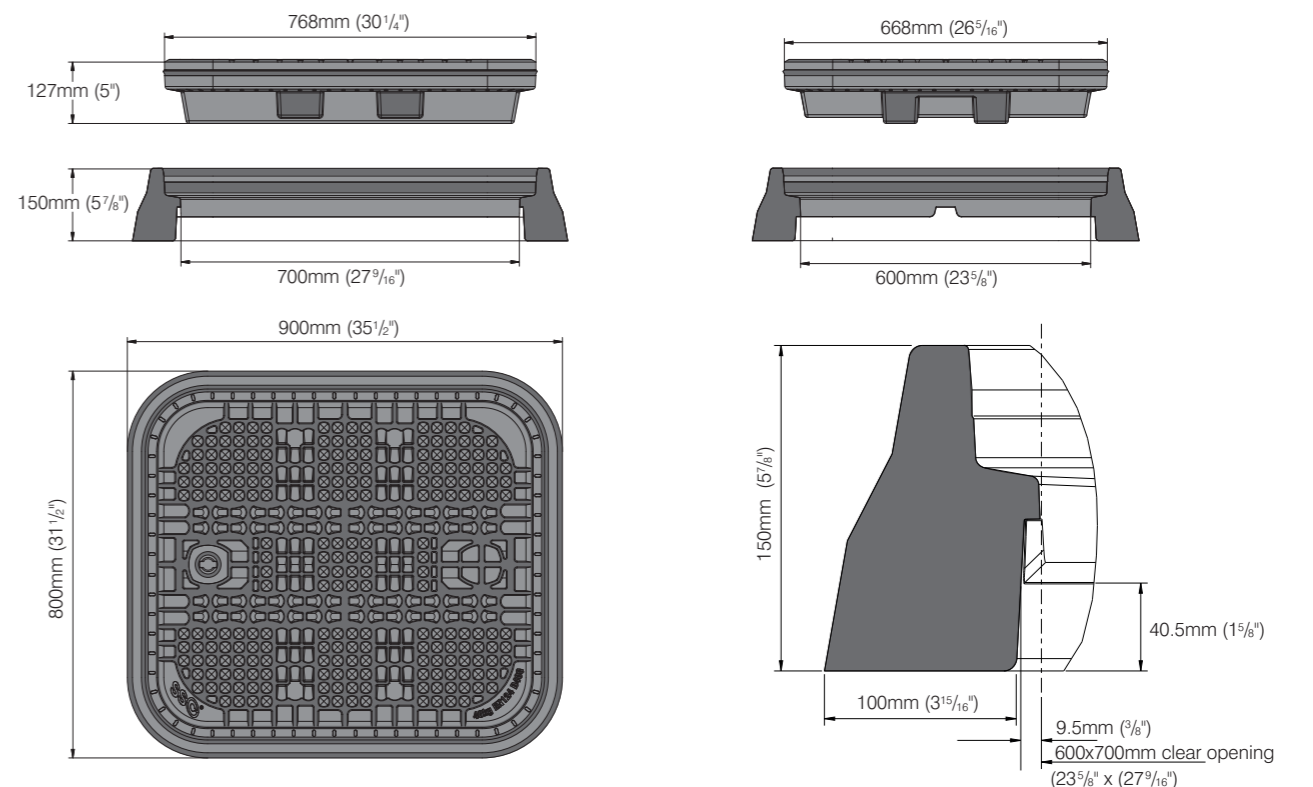
Dimensions

EN124:1994 Class D400 DS6 and DM6 Rectangular Composite Access Covers

DS6 610x610mm Rectangular cover



DM6 600x700mm Rectangular cover



The frame is to be installed to the appropriate standard/specification for that particular installation. For reference purposes only. This drawing is not a specification.

Technical Specification

EN124:1994 Class D400

DS6 610x610mm & DM6 600x700mm Rectangular Vehicular Composite Access Cover

Cover Specification

Load Rating:	EN124:1994 Class D400
Clear Opening:	DS6 - 610 x 610mm (23" x 24") DM6 - 600 x 700mm (23 ⁵ / ₈ " x 27 ⁹ / ₁₆ "
External Dimensions:	DS6 - 672 x 672 x 127mm (26 ¹ / ₂ " x 26 ¹ / ₂ " x 5") DM6 - 668 x 768mm (26 ⁵ / ₁₆ " x 30 ¹ / ₄ " x 5")
Skid Resistance (wet polishes)	PSRV 60
Weight:	DS6 - 29kg (63.8lb) Combined weight with cover 44kg (96.8lb) DM6 - 31kg (68.3lb) Combined weight with cover 46.5kg (102.5lb)
Lifting points:	Single key housing
Tread depth:	Tread depth complies with EN124:1994
Tread type:	Embedded aggregate – uni-directional
Wear Indicators:	Four moulded
Markings:	Week, year and location of manufacture on the underside of cover. Cover size, weight on the top surface.
Corrosion/Chemical resistance:	All component parts are resistant to chemical attack, diesel, petrol, salt and water or a combination of the above over the lifespan of the cover. Surface discolouration is acceptable in service.
Combustion properties:	All component parts do not support combustion. Products of combustion do not contain harmful chemicals (e.g. bromides)
Sealed:	DM6 only (optional - can be retro-fitted)
Vented:	Available on request
Carbon footprint:	Low
Material:	Advanced fibre glass composite
Client logo:	Can be provided on top surface
Security Features:	Lock and security plug (lock cannot be left open on replacement of cover)

Frame Specification

Load Rating:	EN124:1994 Class D400
Clear Opening:	DS6 - 610 x 610mm (23" x 24") DM6 - 600 x 700mm (23 ⁵ / ₈ " x 27 ⁹ / ₁₆ "
Weight:	DS6 - 15kg (33lb) DM6 - 15.5kg (34.2lb)
External Dimensions:	DS6 - 810 x 810 x 150mm (31 ⁷ / ₈ " x 31 ⁷ / ₈ " x 5 ⁷ / ₈ " DM6 - 800 x 900mm x 150mm (31 ¹ / ₂ " x 35 ¹ / ₂ " x 5 ⁷ / ₈ "
Material:	Advanced fibre glass composite
Installation Details:	Provided in full as separate document

Designs and specifications are subject to alteration, so that continuous improvement can be undertaken.



Structural Science Composites Ltd

8 James Freel Court, James Freel Close, Barrow In Furness, UK, LA14 2NG
T: +44 (0)1229 814340 E: covers@structuralscience.net W: www.structuralscience.net